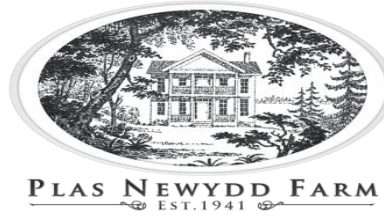


Welcome to Plas Newydd and Thank you.



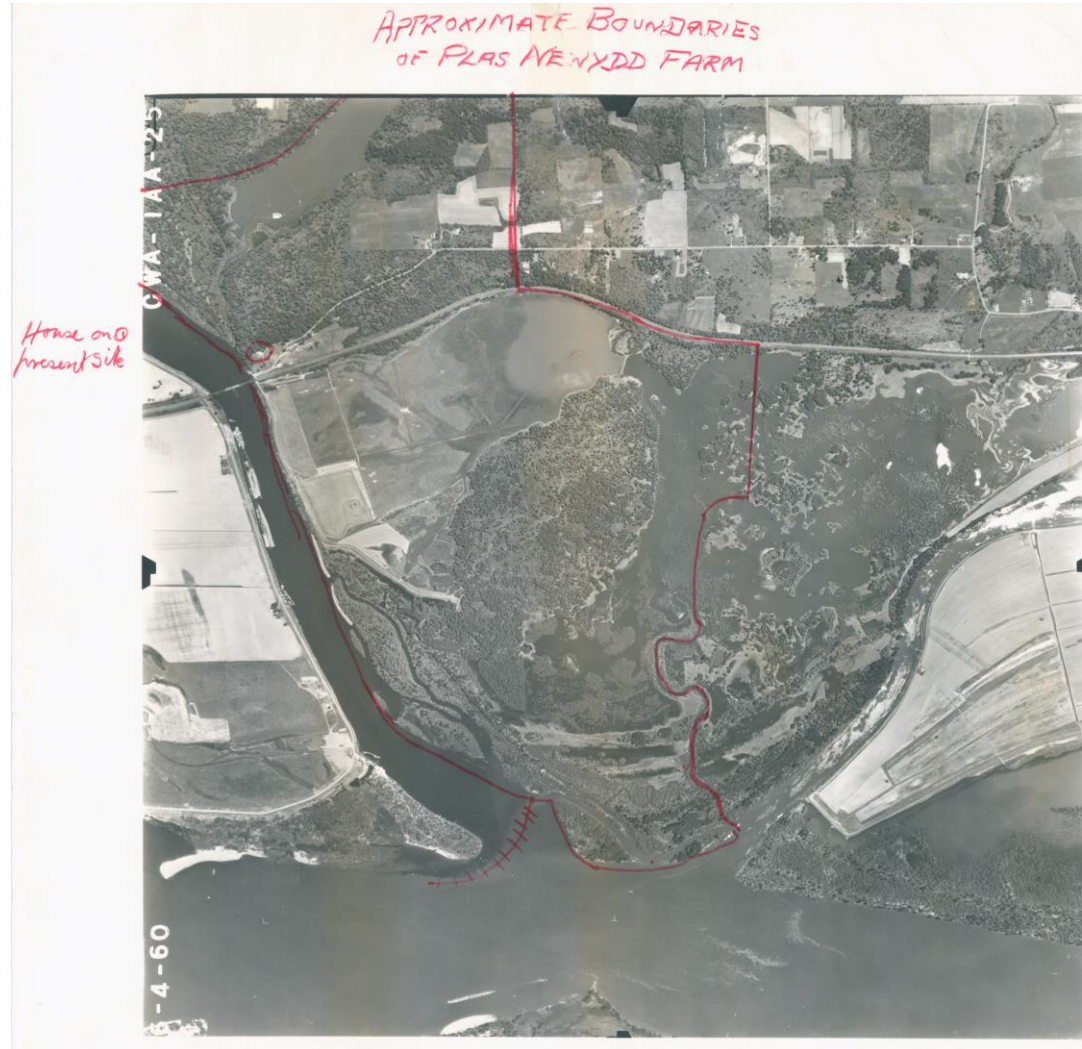
1929 Aerial Photo
showing farm area

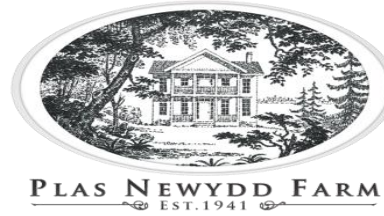




1979 Aerial Photo
Hard to see major harvest
in the middle lands.
Rhidian replanted these
areas extensively.

Photos were very hard to
come by before Google
earth.





1996 Flood
Major event for non
forestry part of the
farm.

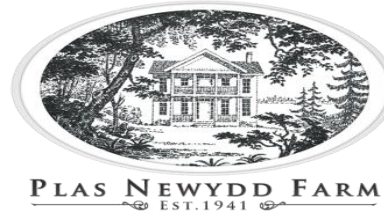


Source: NAIP 2004
Photo Date: 10/12/2004
River Stage: 3.75' NGVD 29

1850-1860 Barn

Historical Timber Frame with some milled lumber as well as Adze marking on the timber framing. But in need of a little work.





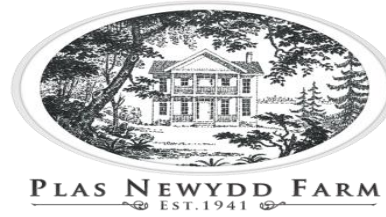
- Barn restoration
- 2011 Restoration Grant from Department of Historic Preservation
- <http://www.dahp.wa.gov/heritage-barn-grants>

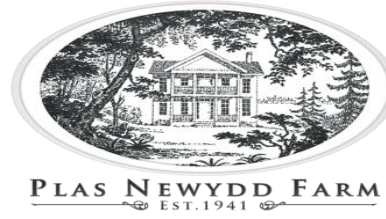


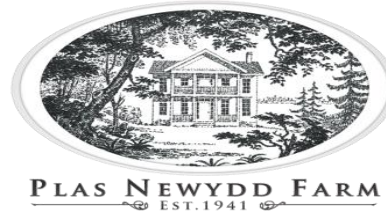
Restoration Actions

- Remove failed roof and siding
- Remove rotten rafters
- Remove rotten top plates
- Replace rotten pole bases
- Replace rotten top plate using material worked on site
- Mill new rafters using local wood
- Replace Roof
- Sheds and sides removed to match original design.



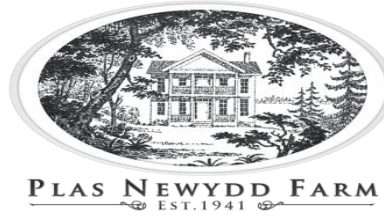






2015 Barn grant
Replace roof and
electrical on Dairy Barn

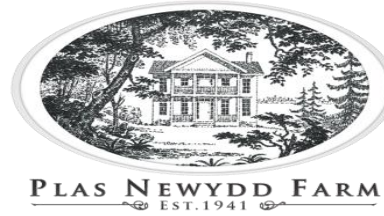




• NRCS Projects

- Oak Habitat Restoration
- Off Channel Watering Systems in 1994 and 2013
- Forest Stand Improvement
- Resistant Species Replanting
- Forest Diversity





1994 Solar Cattle well

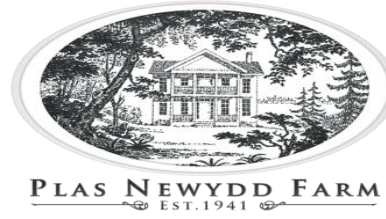
Installed to move cattle off sensitive areas near the river and provide clean water for the animals.

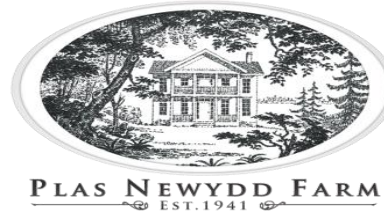


2011 Solar Cattle System

Installed to protect the Lewis river from cattle actions and protect open water in the fields.







WHIP and EQIP Programs

Working with Anitra and the Soil Conservation Service, and later NRCS (Natural Resources Conservation Service) over decades we have used both programs to enhance habitat and manage timber areas. We installed 4000' of off channel water system for Cattle. We did forest stand improvement, thinning in a year that had no market. We also did Oak habitat restoration where competing species were removed from the Oak Savannah understory. All these programs serve several uses, they help habitat and make transitions to best practices easier. They are designed to be about 75% of commercial cost.

Tools Applications Contracts Rates Forms Funds Reports Contact Us Help Log Off Session ends in 30 minutes if not active. #

Manage Contracts - Name and Contract Number

Find Contracts

Name & Contract Number

Programs

Practices

Pending Actions

Maintenance

Clear Selections

Search

Participant Name:

plas newydd

Contract Number:

☐ Name starts with

☐ Contract Number starts with

GO

Contracts Returned: 1 - 7 of 7

Contracts

ViewContract

Expand Items

Collapse Items

Manage Letters

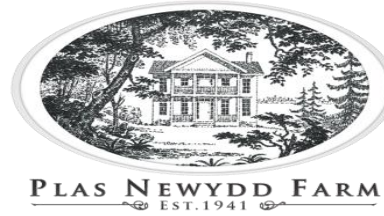
Totals

Export

	Program	State	County	Field Office	Participant	Contract Number	Status	Obligation	Payments	Contract Acres
+	WHIP 2008	WA	CLARK	BRUSH PRAIRIE SERVICE CENTER	PLAS NEWYDD LLC	720546090MX	Completed	\$3,362.34	\$3,362.34	20.8
+	EQIP 2008	WA	CLARK	BRUSH PRAIRIE SERVICE CENTER	PLAS NEWYDD LLC	740546100ER	Completed	\$1,346.04	\$1,346.04	10.0
+	EQIP 2008	WA	CLARK	BRUSH PRAIRIE SERVICE CENTER	PLAS NEWYDD LLC	740546110GV	Completed	\$5,310.00	\$5,310.00	40.0
+	EQIP 2008	WA	CLARK	BRUSH PRAIRIE SERVICE CENTER	PLAS NEWYDD LLC	740546130AA	Completed	\$44,308.11	\$44,308.11	285.3
+	WHIP 2002	WA	CLARK	LONGVIEW SERVICE CENTER	PLAS NEWYDD LLC	720546070W7	Completed	\$2,940.00	\$2,940.00	23.0
+	WHIP 2002	WA	CLARK	LONGVIEW SERVICE CENTER	PLAS NEWYDD LLC	720546080WW	Completed	\$6,860.63	\$6,860.63	20.0
+	WHIP 2002	WA	CLARK	LONGVIEW SERVICE CENTER	PLAS NEWYDD LLC	7205466A376	Completed	\$11,812.50	\$11,812.50	39.4

\$76,000

Each year has different priorities, and needs, and you need to adapt rapidly. Our biggest grant we had been talking about for over 10 years.



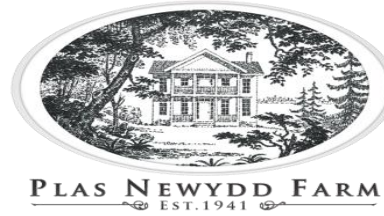
info@truffledogcompany.com

Working with NW Truffle dogs to setup a harvest and season timing. All fungi have micro climates that make timing difficult.



Alternate Forest Products





- Tree Farm System



American Tree Farm System

We grow stewardship from the roots.

Planting Types,

Cedar, Willamette Valley Ponderosa Pine, Western White Pine, Oak Savannah

Research on historical tree types

Root rot control.



Custom Milling



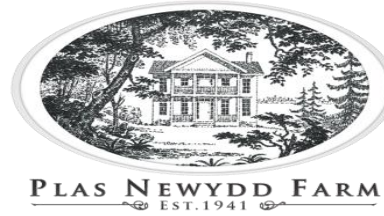
- Drying
- Stacking
- Labeling








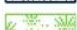



Picture of each with dimensions
Sticker to move weight evenly
Accessibility and inventory



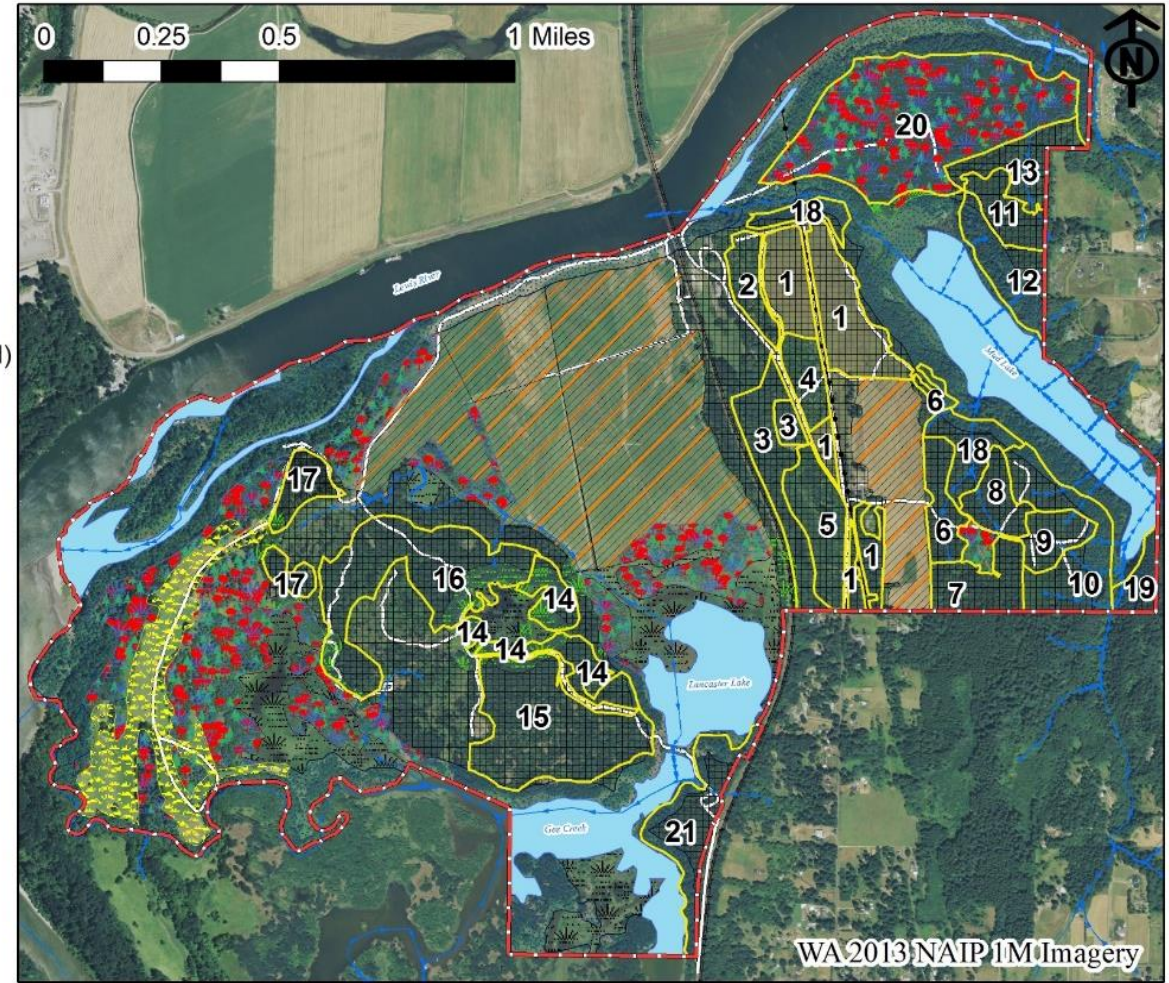


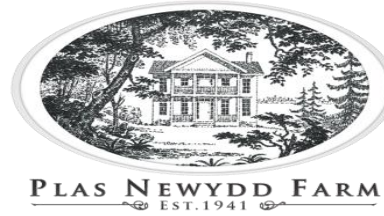
Forest Management Plan
Harvest Plan and Rotation
Working on approximately 12 acre
cutting areas every year for a 50 year
rotation where we can achieve that.

Legend

-  Property Boundary
-  FMU #
-  Upland
-  Ag Fields
-  RMZ Buffer
-  WMZ Buffer
-  Wetlands
-  Wetlands (Forestred)
-  Meadows
-  Open Water
-  Streams

SPECIAL MANAGEMENT AREAS - PLAS NEWYDD, LLC

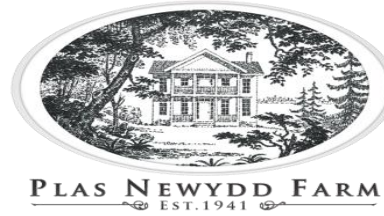




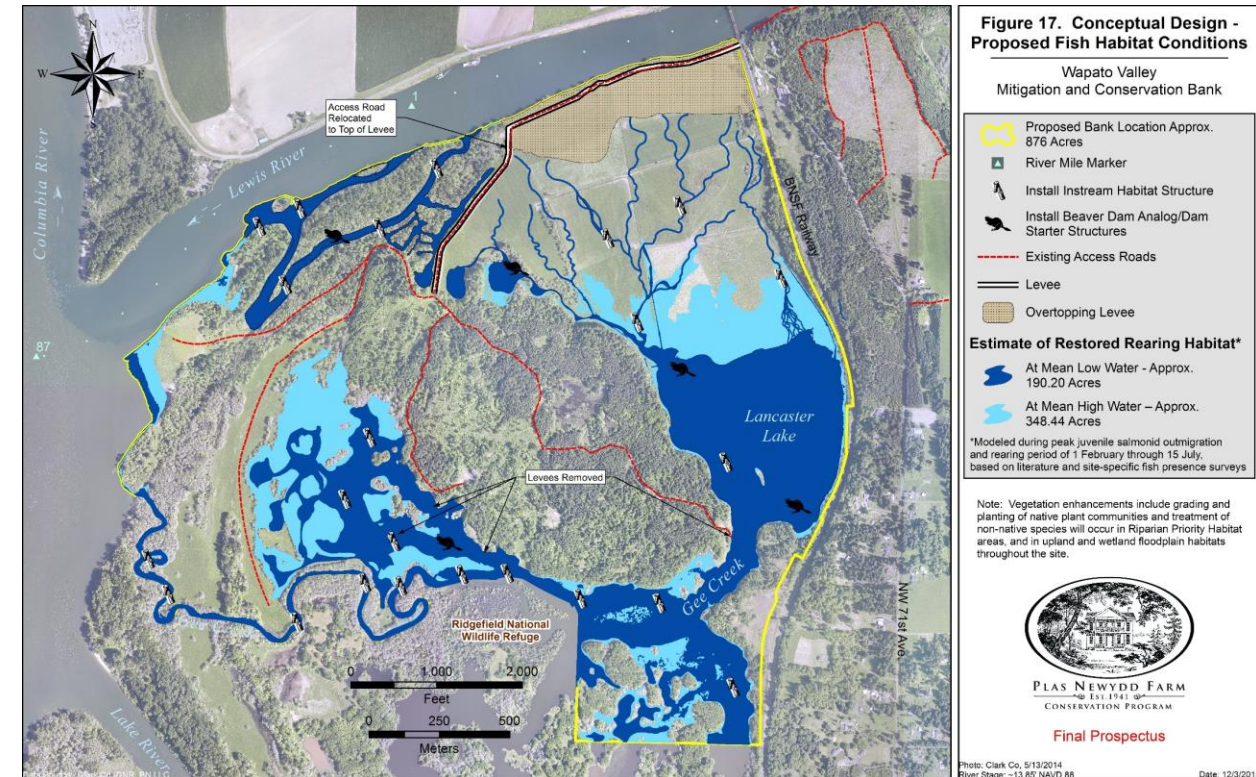
Google Earth forestry

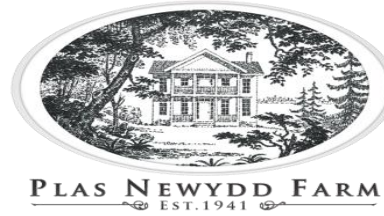
2011 planting now able to see the pine tree survival in google earth. The fir and cedar do not seem to show up as well. Cedar in this picture in tree tubes to protect from deer. Site had several super dry years favoring Willamette Valley Ponderosa Pine





- Ecosystem Services
- Restoring wetland and species habitat to unique areas.
- Creating Long term funded protection for the farm maintaining both family goals and habitat availability.
- Allowing continued best practice forestry in areas that are suited to forest land
- Oak Savanna and Oak woodland restoration and protection.
- Fish habitat restoration as well as other threatened species.





- Tour
 - 1st Stop Replant Date
 - 2nd Stop 2011 Harvest
 - 3rd Stop
 - 4th Stop
 - 5th Stop

