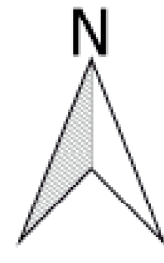




# Coulson

12N 1W S6  
14440-002-000  
Total acreage: 17.8



0 100 200 300 400 ft



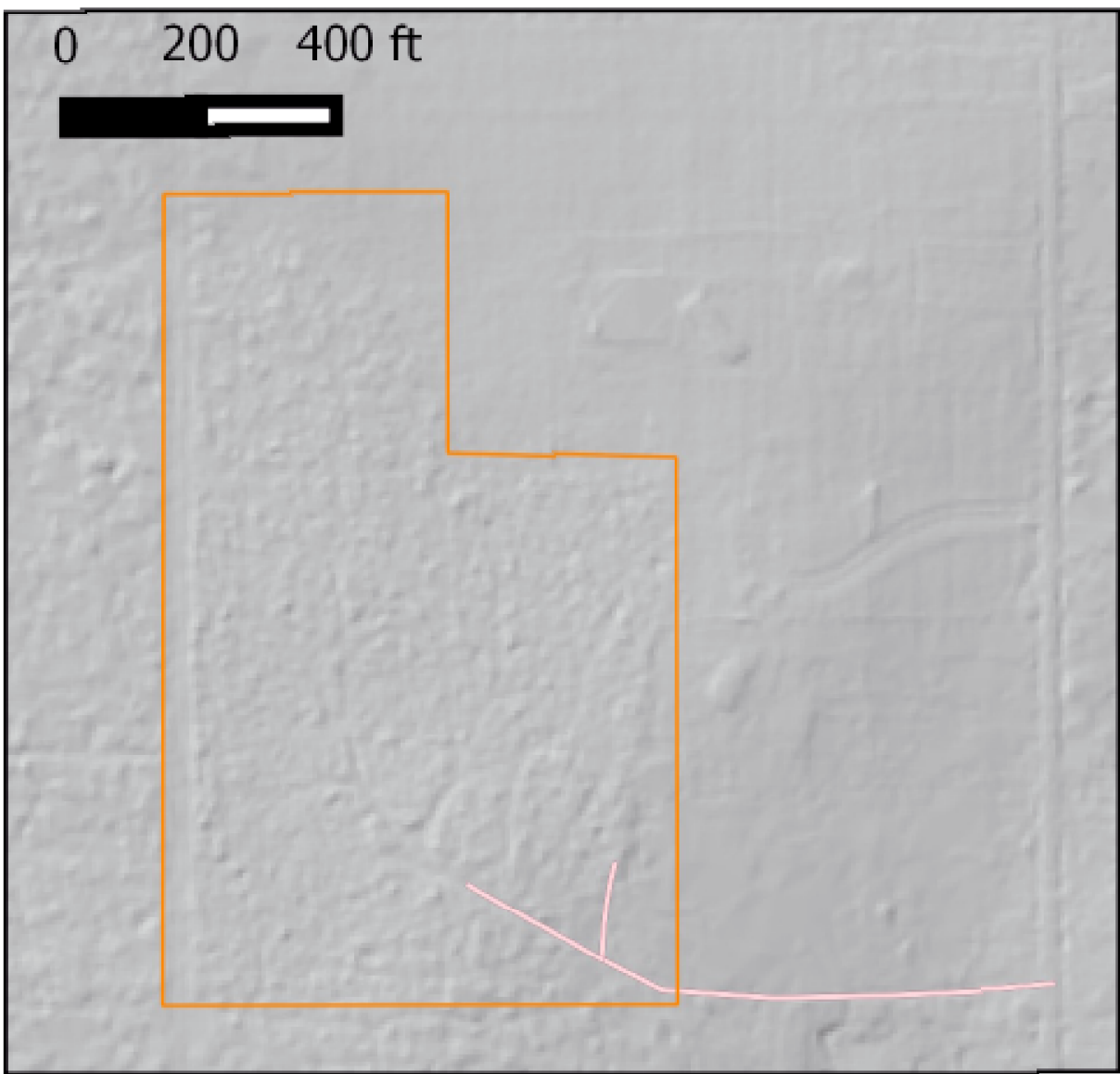
- Roads
- Pipeline
- Site Class (all one class)

## Corner Markers

- On Survey

## Timber Types

- DF 1935 - 2.58 Acres
- DF 1995 - 1.3 Acres
- DF-VPP 2004 - 12.81 Acres
- Pipeline - 1.17 Acres



Access at 46.550510, -122.855883.  
All treatment areas have equal dimension, 190' x 455'  
Vertical lines are 0/360 degrees.  
Horizontal lines are 180/270 degrees.  
Plots are 123' apart vertically, and 112' horizontally

Map created by Jaal Mann using QGIS, October 2017  
Contours are 10' intervals